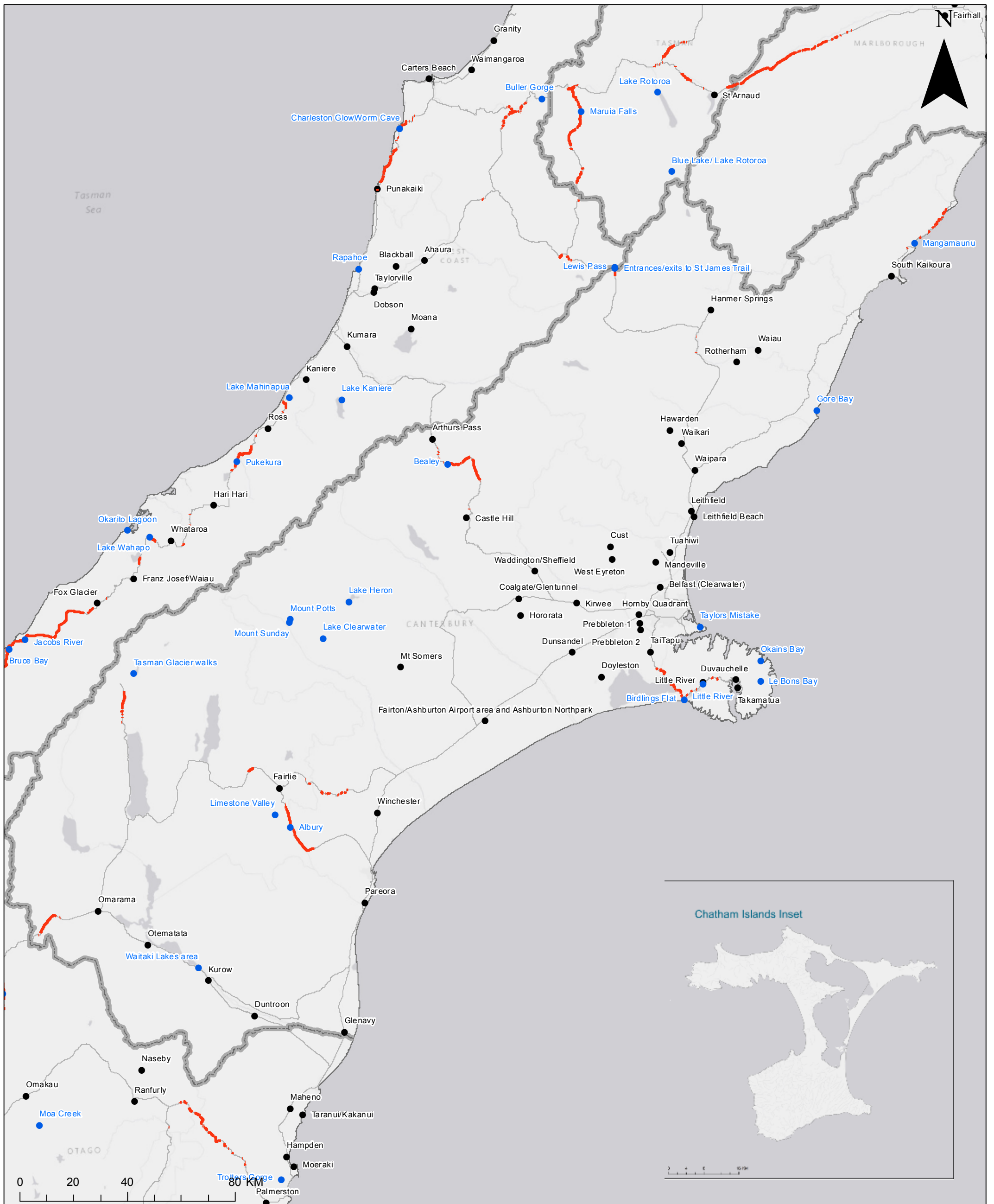


CANTERBURY REGION (INCL CHATHAM ISLANDS) NEW COVERAGE



*The blue tourism areas and red State Highway coverage on this map are indicative, representing coverage expected to be achieved with the first \$150 million provided to the Rural Connectivity Group (RCG). The RCG contract will be expanded with another \$100 million to cover remaining tourism areas (not shown on this map) and remaining State Highway blackspots (not shown on this map).

**RBI2 end users are households and businesses. This projection is indicative and can fluctuate as the final locations for RBI2 sites are subject to land acquisition and consents.

39 new areas getting UFB
100 km State Highway Coverage
17 tourism locations
9,727 RBI2 End Users

- Tourism New Coverage*
- State Highway New Coverage*
- UFB2+