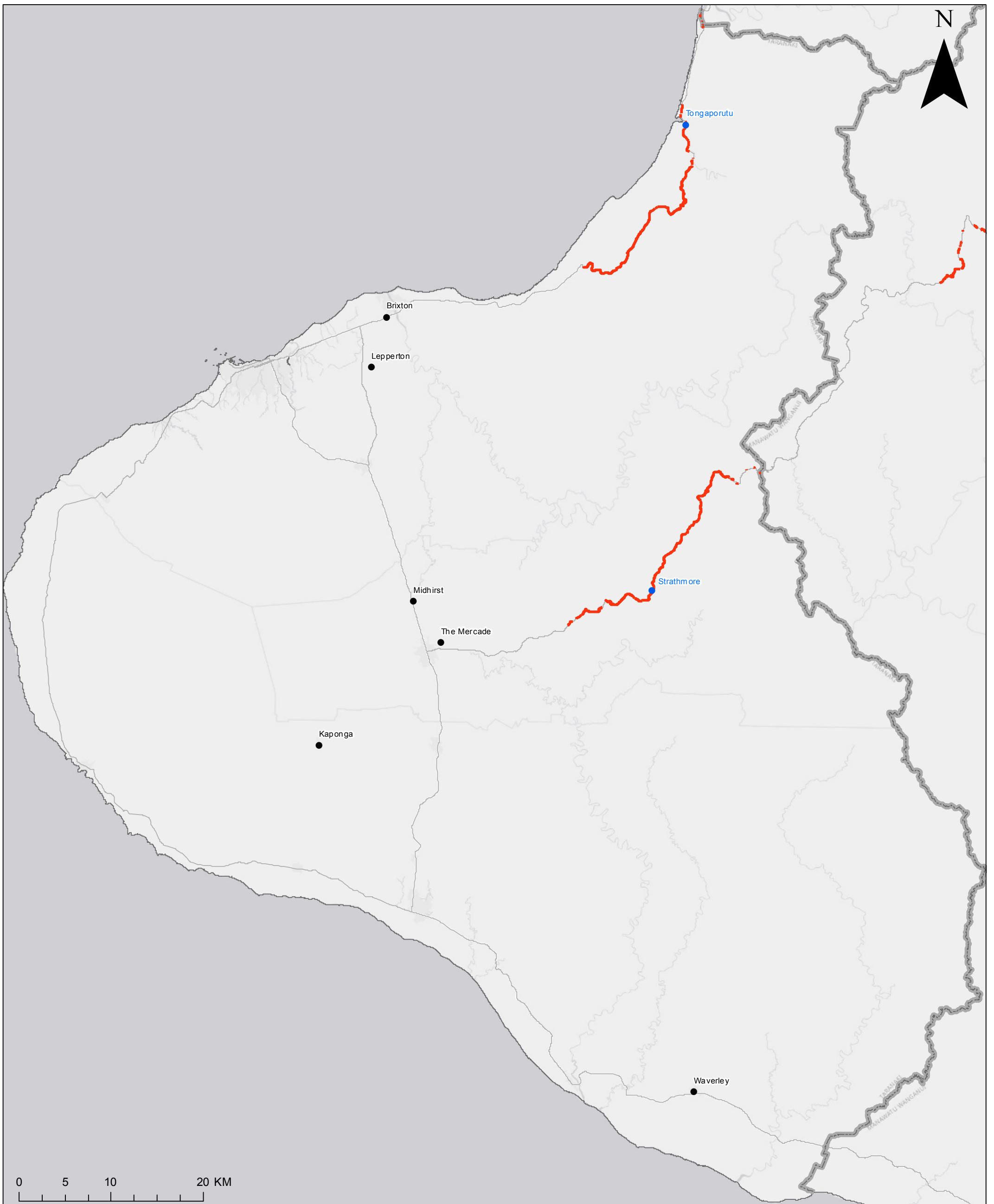


TARANAKI REGION NEW COVERAGE



*The blue tourism areas and red State Highway coverage on this map are indicative, representing coverage expected to be achieved with the first \$150 million provided to the Rural Connectivity Group (RCG). The RCG contract will be expanded with another \$100 million to cover remaining tourism areas (not shown on this map) and remaining State Highway blackspots (not shown on this map).

**RBI2 end users are households and businesses. This projection is indicative and can fluctuate as the final locations for RBI2 sites are subject to land acquisition and consents.

6 new areas getting UFB
62 km State Highway Coverage
2 tourism locations
2,053 RBI2 End Users

- Tourism New Coverage*
- State Highway New Coverage*
- UFB2+