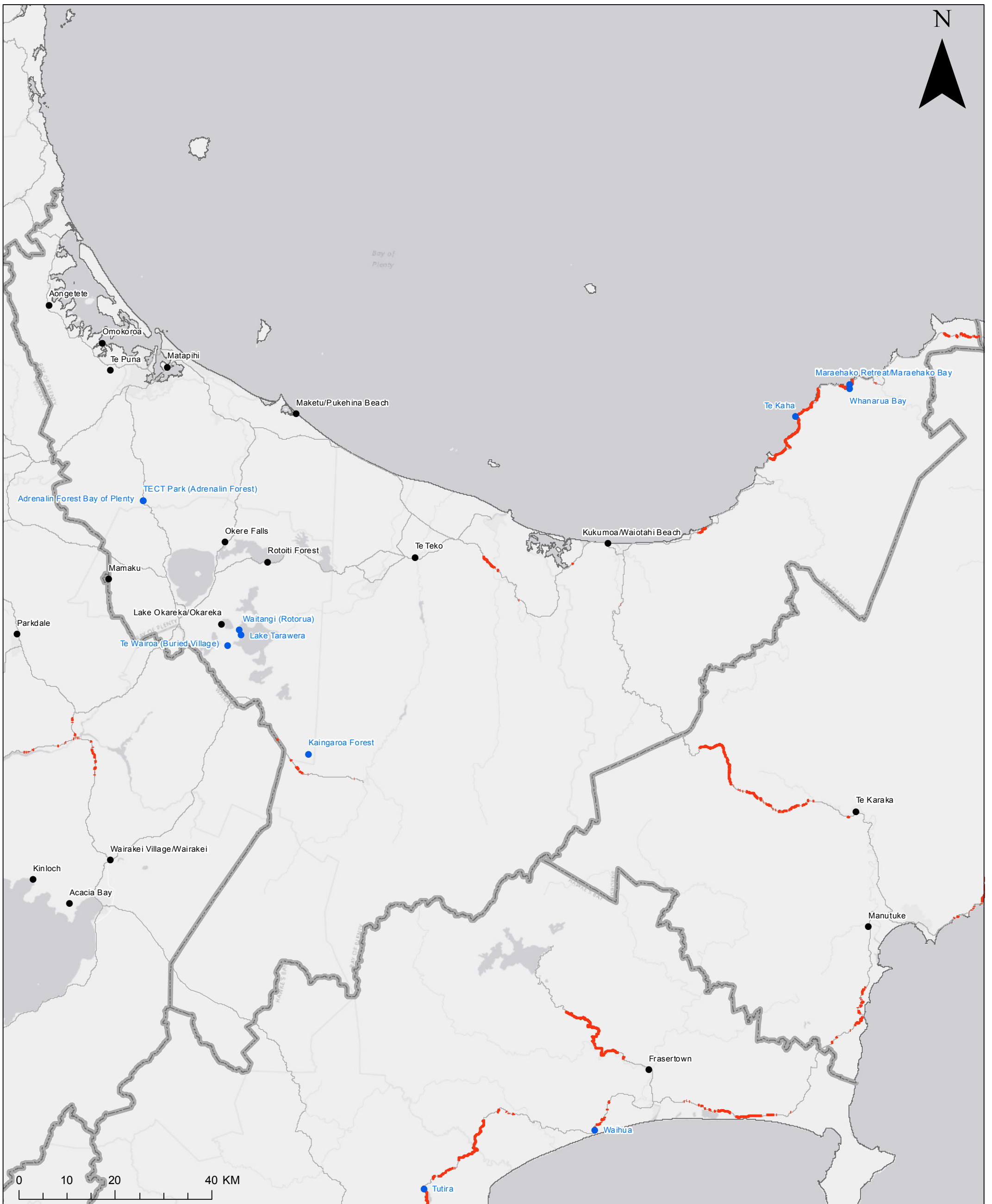


# BAY OF PLENTY REGION NEW COVERAGE



\*The blue tourism areas and red State Highway coverage on this map are indicative, representing coverage expected to be achieved with the first \$150 million provided to the Rural Connectivity Group (RCG). The RCG contract will be expanded with another \$100 million to cover remaining tourism areas (not shown on this map) and remaining State Highway blackspots (not shown on this map).

\*\*RBI2 end users are households and businesses. This projection is indicative and can fluctuate as the final locations for RBI2 sites are subject to land acquisition and consents.

**10 new areas getting UFB**  
**42 km State Highway Coverage**  
**9 tourism locations**  
**5,041 RBI2 End Users**

- Tourism New Coverage\*
- State Highway New Coverage\*
- UFB2+